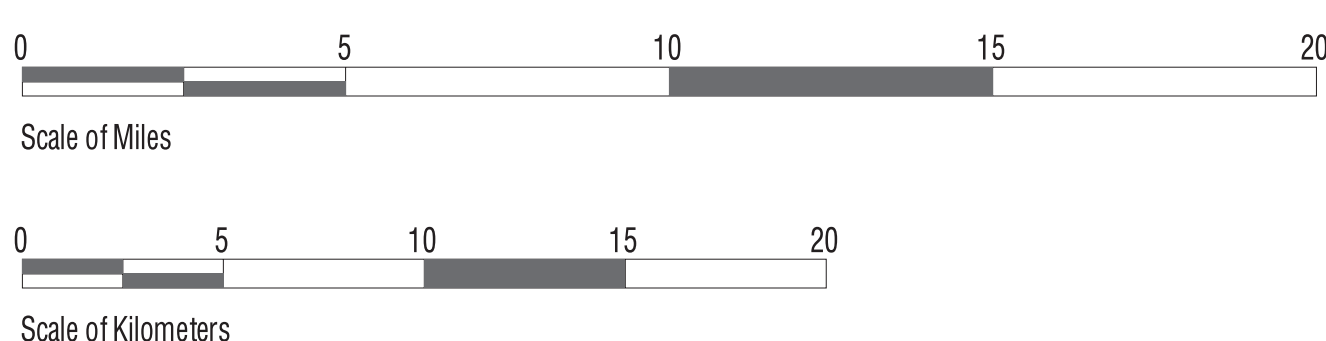
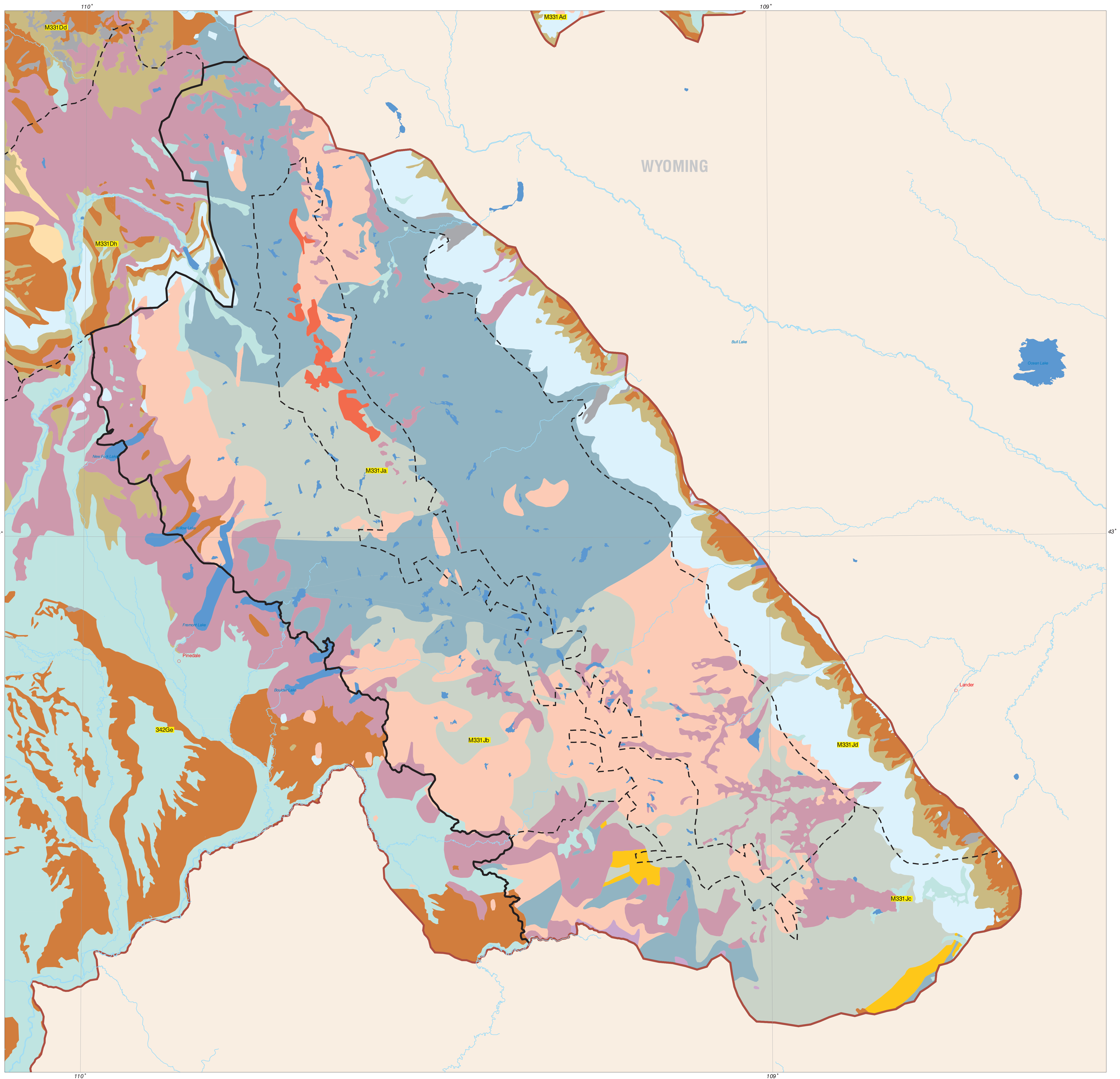


Legend

- Alluvium
- Wind Deposited Sediments
- Glacial Sediments
- Glacial Ice
- Landslide-Mass Wasted Units
- Loess
- Gneiss,Schists
- Carbonates
- Calc-Silicates
- Granitics
- Volcanics
- Metasediments
- Shale Associates
- Soft Sedimentary
- Quartzites
- Sandstone
- Water
- Study Area
- Subsections
- Sections
- State Border
- River or Stream



Albers Equal Area Projection Scale 1:188000

Lithology from USFS Region, Missoula MT.  
Section and Subsections delineated by Region One USFS  
according to National Ecological Mapping Hierarchy  
General Technical Report INT-GTR-369  
Other base data from various sources; U.S. Census TIGER files,  
ESRI ARCUSA 1:2M edrom.